

3650

INSULATED SANDWICH

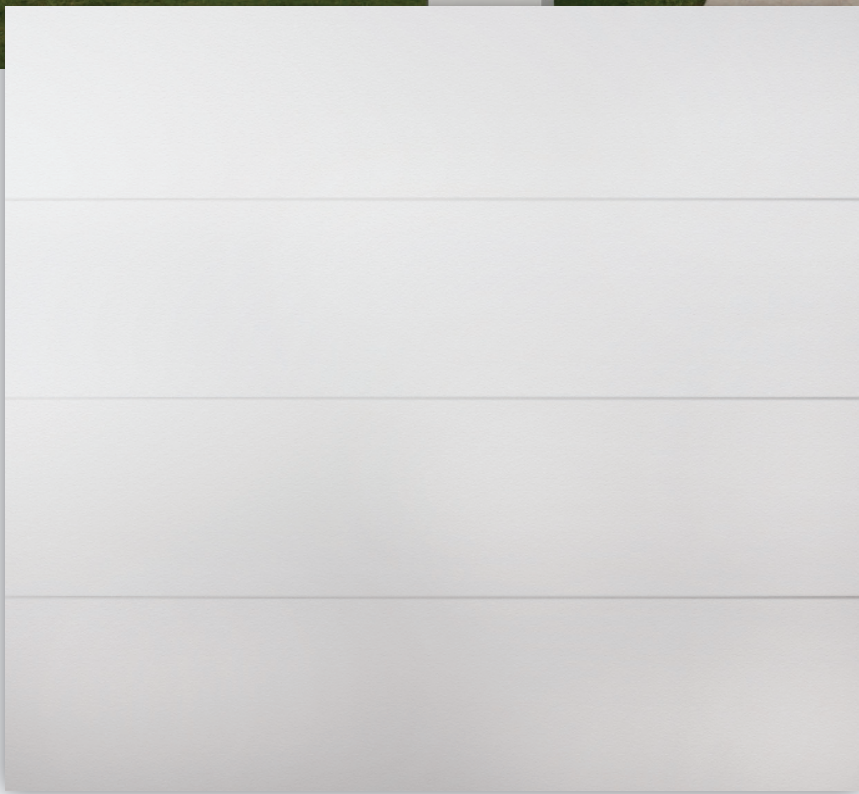


Flush Panel 3 Layer Sandwich

FLUSH PANELS



↑ GRAY | RANCH WINDOWS



Flush Panel

2" thick insulated steel sandwich panel constructed of top quality materials. Flush panel with deep woodgrain texture and two coat prefinished paint system all combine to enhance the beauty of your home.

- 2" thick insulated 3 layer sandwich panel
- 1.0 mil paint with 7 color options
- R-value 10.25
- Steel interior skin

↑ WHITE



WHITE



ALMOND



DESERT TAN



SANDSTONE



BROWN




GRAY




BLACK


**Colors may vary from actual product*


FEATURES

- 


26 GAUGE STEEL
Hot dipped galvanized steel construction with hemmed inside return rail provides superior strength and durability.
- 

ROLLED SAFETY EDGES ON SECTION JOINTS
Eliminates sharp edges, and provides extra strength.
- 

20 GAUGE HOT DIPPED STEEL HINGE PLATES
Galvanized steel hinge plates run the full height of each section at all hinge locations to facilitate the attachment of hinges, handles, struts, and step plates.
- 

TONGUE AND GROOVE MEETING RAILS
For superior strength and better sealing against wind, rain, and snow.
- 

RIGID ALUMINUM RETAINER WITH WEATHERSTRIP
Provides added strength while securing replaceable U-type bottom astragal weatherstrip to help keep the elements out.
- 

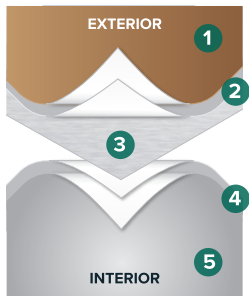
R-VALUE 10.25
Sandwich type construction with polystyrene insulation pressure bonded between two sheets of hot dipped galvanized steel enhances your home's energy savings, makes your door operation quieter, and reduces exterior noise in your garage.
- 

CFC FREE EXPANDED POLYSTYRENE
Environmentally friendly insulation that will not degrade with vibration or time.



↑ SANDSTONE

PAINT LAYERS



1.0 MIL PAINT SYSTEM

Includes .25 mil rust inhibiting primer and .75 mil exterior top coat that resists fading and chalking, while providing consistent color from panel to panel and more durability.

- 1 Paint - .75 MIL
- 2 Primer - .25 MIL
- 3 Steel
- 4 Primer - .2 MIL
- 5 Paint - .3 MIL

WINDOW OPTIONS

Contact your supplier for window options

WINDOW GLASS OPTIONS

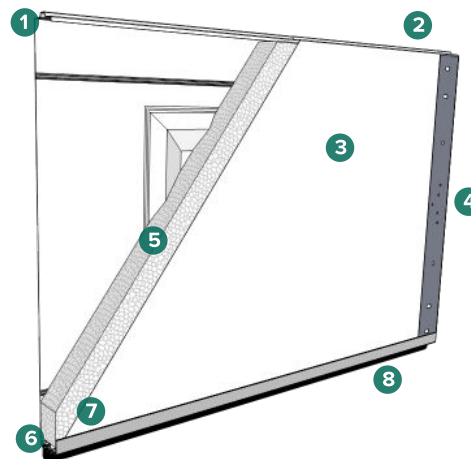
Contact your supplier for glass options

SIZE OPTIONS

WIDTHS:
8', 9', 10', 12', 14', 15', 16', 17', 18', 20', 22', 24'

HEIGHTS:
6'6", 6'9", 7'0", 7'6", 7'9", 8'0"

CONSTRUCTION



- 1 Tongue and groove meeting rails
- 2 2" thick section
- 3 Pebble grain embossed interior backskin
- 4 20 gauge hot dipped galvanized steel end caps
- 5 CFC free expanded polystyrene insulation
- 6 Replaceable U-Type vinyl bottom weatherstrip
- 7 20 gauge full vertical steel hinge plate for hardware attachment
- 8 Extruded aluminum weatherstrip retainer